

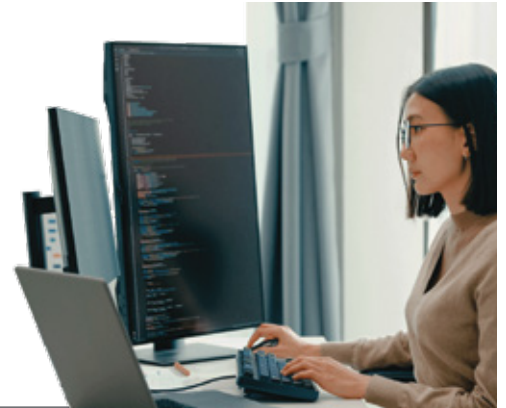
SIEM Accelerator

Optimize Real-Time Threat Detection & Response

SIEM Customized for Your Security Needs & Requirements

Security Information and Event Management (SIEM) enables you to detect, investigate, and respond to security threats before they cause serious damage to your organization. But too often, SIEM tools aren't optimized for your specific environment and reporting requirements, with generic out-of-the-box settings that fall short of SIEM's potential.

Stratascale's SIEM Accelerator streamlines and optimizes the deployment, integration, and configuration of SIEM platforms – providing a comprehensive, centralized view of your entire network that empowers you to spot threats sooner, respond faster, and unlock the value of your SIEM.



Tailored SIEM Implementation for Maximum Efficiency & Value

Stratascale's SIEM Accelerator goes beyond basic implementation to offer a fully customized deployment that aligns with your organization's specific security needs and advances your top business goals.



Strategic Assessment & Planning

Evaluate current security infrastructure by defining key requirements and building a tailored SIEM roadmap.



Continuous Optimization & Tuning

Fine-tune SIEM performance to optimize alerting and reduce false positives, improving accuracy and efficiency for security teams.



Seamless Integration

Integrate cloud, network, and application data sources, configuring log collectors to seamlessly mesh with existing security tools and infrastructure.



Security & Compliance Alignment

Implement data security and privacy best practices, compliance reporting, and auditing features to meet industry-specific compliance requirements such as PCI-DSS and HIPAA.



Configuration for Real-Time Monitoring

Set up customized dashboards, security alerts, and correlation rules that enable real-time monitoring, centralized security visibility, and advanced threat detection and response mechanisms.



Ongoing Training & Knowledge Transfer

Hands-on training and ongoing support, that empowers security teams to effectively utilize the platform for continuous monitoring and threat intelligence.

Detect, Investigate
& Respond **Faster**

Stratascale's SIEM Accelerator ensures your security posture is optimized for peak performance, with centralized visibility, real-time alerts, and optimized workloads that enhance threat detection and security monitoring across your organization.